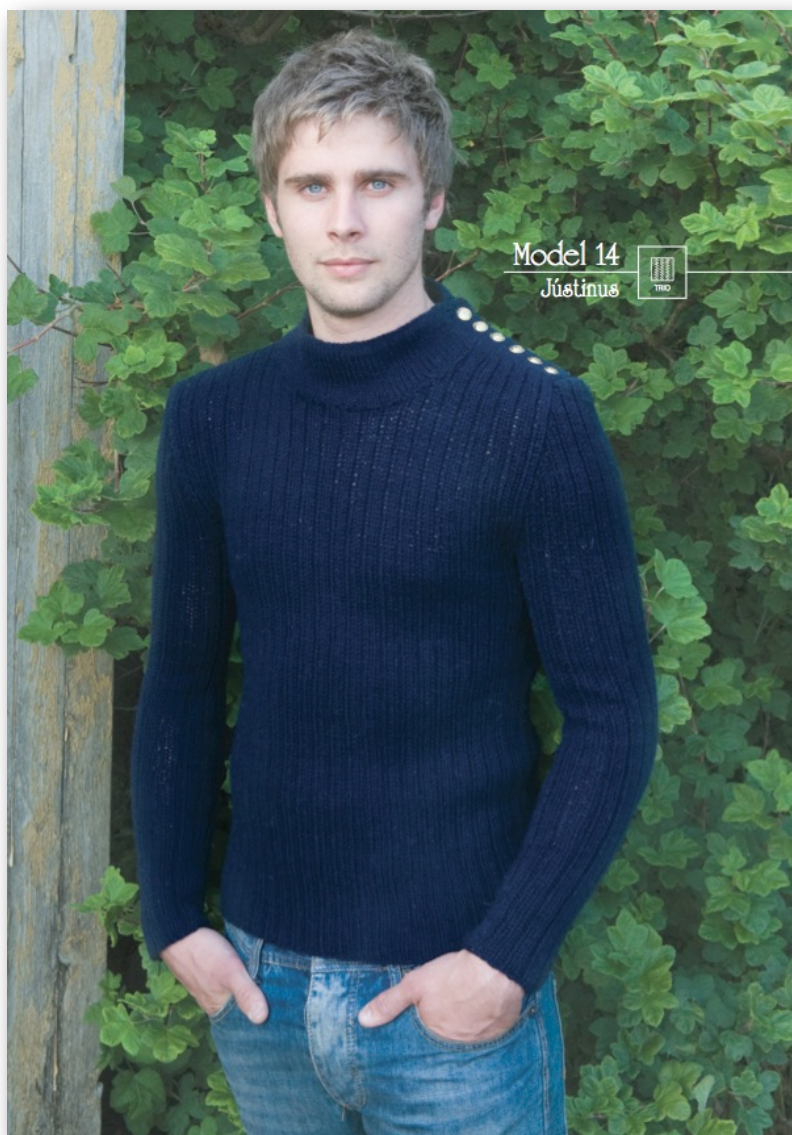




Traditional Button Jumper



Code PNB14M14

Design Sára Mrdalo

Size S (M) L (XL)

Chest Measurement

90 (97) 103 (110) cm

Length 60 (63) 65 (67) cm

Needles 4 mm and 5 mm
circular needles (80 cm),
4 mm and 5 mm double-
pointed needles, and 4 mm
crochet hook.

Yarn Navia Trio

Yarn Requirements 8 (9)
10 (11) x 50g balls of Navy
Blue YN3324

Accessories 6 (7) 8 (8)
buttons

Tension 18 stitches = 10
cm in rib on 5 mm needles.

Note: It is really important to observe the tension. The needles in the pattern are only a guide. If the stitch count measures less than 10 cm, change to thicker needles. If the stitch count measures more than 10 cm, change to thinner needles.

Back/Front

Using the 5 mm circular needle, cast on 162 (174) 186 (198) stitches, and work rounds in rib (2 plain, 1 purl) until the work measures 42 (44) 45 (47) cm.

Now cast off 12 stitches for the armholes on each side = 69 (75) 81 (87) stitches left on each side. The back and front are worked separately from here onwards.

Back

Continue straight in rib until the work measures 18 (19) 20 (20) cm from the armhole. Let the stitches rest while the front is worked.

Front

Continue straight in rib until the work measures 10 (11) 12 (13) cm from the armhole. Now cast off the centre 19 (21) 23 (23) stitches for the neck, and then cast off 1 stitch, for the neck edge, on every 2nd row, until there are 21 (24) 27 (27) stitches left on the needle. Continue without decreases. When the front is the same length as the back, place the right shoulder stitches together with right side facing and knit together 2 and 2, casting off at the same time. Then work the other shoulder, but let the left shoulder stitches from the front and back rest until you are ready to work the neck.

Sleeves

Using 5 mm double-pointed needles, cast on 37 (39) 42 (42) stitches and work rounds in rib (2 plain, 1 purl), while at the same time increasing 2 stitches on the underside of the sleeve, on every 12 (12) 10 (10)th round, until there are 53 (59) 66 (68) stitches. Continue without increases. When the sleeve measures 45 (47) 48 (49) cm or is the required length, cast off 12 stitches on the underside of the sleeve. Now complete the sleeve by working forwards and backwards on the needles. Knit 2 together on each side on every 4th row, 4 times, then on every 2nd row until there are 9 (11) 13 (14) stitches left on the needles. Cast off.

Neck

Note: The neck and the buttonhole band are worked in stocking stitch. The neck is knitted double.

Pick up and knit 70 (75) 80 (84) stitches around the neck edge and work forwards and backwards in stocking stitch, until the neck measures 7 cm. Let the work rest without casting off. Now, working from the purl side, pick up and

knit 70 (75) 80 (84) from the first row of the rib edge and work this 2nd section in stocking stitch in the same way as the 1st. Knit the stitches from the 1st and 2nd sections of the neck together 2 and 2, casting off at the same time.

To make a buttonhole

Cast off 2 stitches, on the next row cast on 2 stitches over these the cast-off stitches.

Button band

Pick up the 21 (24) 27 (27) rested shoulder stitches from the back and 9 stitches from the neck edge on the 4 mm needle (= 30 (33) 36 (36) stitches). Work 6 rows in stocking stitch. Cast off.

Buttonhole band: Using the 4 mm needle, pick up the 21 (24) 27 (27) rested shoulder stitches from the left front and pick up 9 stitches from the neck edge (= 30 (33) 36 (36) stitches). Work 6 rows in stocking stitch and at the same time make 6 (7) 8 (8) evenly spaced buttonholes on the 4th row. The buttonholes are worked over 2 rows. Cast off. Crochet 1 row of double crochet and then 1 row of double crochets worked left to right along the edge of the buttonhole band.

Assembly

Sew or crochet the sleeves in. Sew the buttons on.

Washing instructions

Wash the jumper in Navia Wool Care. After washing spread out the jumper on a towel to dry.